



20

YEARS *of* EDUCATING
COMMUNITY LEADERS

Leadership[★]

SAN LEANDRO

JUNE 12, 2015



Leadership

SAN LEANDRO

WHAT IS LEADERSHIP SAN LEANDRO?

Leadership San Leandro is a professional development, networking and outreach program of the Chamber of Commerce. Led by an Executive Leadership Coach, participants receive training throughout the program on leadership strategies; learn how the city functions; visit local institutions and businesses; and hear directly from government and business leaders about their roles, experiences and professional growth. The guest speakers represent a diverse cross section of the community, ranging from elected officials to high-tech innovators to police officers, communications experts and entrepreneurs.

WHO SHOULD ATTEND?

Individuals living or working in San Leandro with a desire to: learn about how to make a difference in our community; improve professional skills; and enhance knowledge of government leadership.

WHAT IS THE COMMITMENT?

- Group Orientation—August
- Group Retreat (2 day, 1 night)—September
- 9 full day monthly sessions on the 3rd Friday—October through May
- Community Service Project—TBD
- Program Fundraiser: The Taste of San Leandro—March
- Program Graduation—June

WHAT IS THE CURRICULUM?

Professional Coaching Themes include:

- Skills Assessment and Analysis
Win-Win Communications and Negotiations
- Effective Feedback Strategies
- Leadership to Generate Results
- Coaching to Inspire Your Team
- Develop a Professional Brand

Guest Presenter Themes include:

- Diversity and History of San Leandro
- Government
- Criminal Justice
- Education and Economic Development
- Health and Human Services
- Technology and Innovation
- M.B.A. In-A-Day
- Media and Communications

WHAT IS THE INVESTMENT?

Program Tuition includes: program materials, professional skills assessment and analysis, retreat lodging and meals, meet day breakfast and lunch. \$895

FOR MORE INFORMATION

Program Director
Breanna Hatcher, 510-207-3777

Program Coordinator
Emily Griego, 510-317-1400

email: leaderships1@sanleandro.com

CLASS OF 2014-15

Dear San Leandro Community,

I'm thrilled to introduce the Leadership Class of 2015 to you.

It is an honor for me to have had the good fortune of supporting their journey. Truthfully, it became an addiction. If you crave watching people grow, this is the program for you. It was such fun to watch them in action along the way: team building on logs, speaking on stage about their work, and hosting an event at the Performing Arts Center for their leadership project.

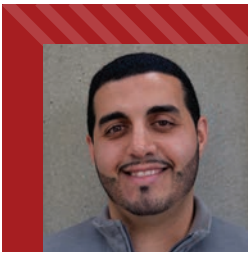
Each month, this group of evolving leaders grew closer and more confident in themselves and each other. It makes me smile when I think back to the retreat. They held nothing back from the beginning: their skepticism, their convictions, their hopes, and their dreams. They challenged each other, inspired each other, and supported each other.

The members of this leadership class possess unique backgrounds and varied experience. In a short nine months they created a cohesive group of inspired leaders. They are a community of loyal, hardworking, and motivated professionals. I will be going through withdrawals this month when I don't get to be a part of their contagious energy and momentum.

Thank you for coming out to celebrate this milestone. Each of these graduates will continue to create amazing things in the world. Congratulations to the Leadership San Leandro Class of 2015!

Breanna Hatcher

Leadership San Leandro Program Director



MURAD AMER

Thrifty Medical Supply, President/Owner

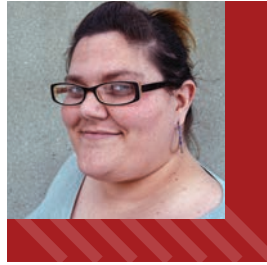
Murad Amer is the President of Thrifty Medical Supply, a locally owned medical supply and equipment company. After earning a BS in Electrical Engineering from San Jose State University and working briefly in the corporate world, Murad realized his innate drive was becoming a business owner. It is his passion for his family and community that drive his successful business.

Aside from his passion for his family, particularly his newfound love of recently becoming a father, his community, and his business, what makes Murad a distinctive individual is his unrelenting willingness to always go the extra mile.

As a proud member of the San Leandro Chamber of Commerce, Murad has developed his role in the community as an honest and trustworthy business owner. Leadership San Leandro has been an integral part of his personal and professional development. Through his experience with the leadership program and the various techniques it taught, he has been able to achieve more and grow as a professional. He is not only grateful for the experience and what it has taught him, but he is also thankful for the relationships he had the opportunity to create with the class of 2015.

SONJA AMOROSO

Stepping Stones Growth Center, Artful Steps Assistant Program Coordinator



Sonja Amoroso works to empower adults with developmental disabilities—to gain self-esteem, independence, and the ability to express themselves—all through the exploration of visual arts. She does so at the San Leandro not-for-profit organization, Stepping Stones Growth Center. Stepping Stones Growth Center provides programs and services to more than 400 adults and children with developmental disabilities. As the Artful Steps Assistant Program Coordinator, Sonja has the pleasure of spending time working directly with folks in the art studio, and also works behind the scenes on program development.

While participating in Leadership San Leandro, Sonja was quite impressed to find a community of inspired people (both within the smaller group, as well as in the larger community), all working to create a dynamic and progressive San Leandro.

Sonja received her B.A. in Psychology from the University of California, Berkeley; she has an unending passion for social justice (which remains one of the few constants since her youth—that, and a serious soft spot for '90s music); and she derives great pleasure in the peace provided by the dark, damp, understory of a redwood forest.



“Truth is Beauty,” a sculpture by Marco Cochrane and the Bliss Dance Crew, will make San Leandro home in 2016 in the public space at a new tech campus near the San Leandro Bart station to be anchored by OSISOFT.

ARLEEN CARINO

*Kaiser Permanente,
Community Benefit Manager*



Arleen Carino has worked for Kaiser Permanente, Southern Alameda County Public Affairs Department for close to 7 years. She is currently the Community Benefit Manager, protecting Kaiser Permanente’s non-profit status by overseeing and facilitating plans, strategies and programs that enhance the health of communities we serve. She has been instrumental in building the capacity of local non-profit organizations to drive measurable health outcomes and she has enhanced the viability of local safety net clinics to improve access to health care services in Southern Alameda County.

Arleen holds a B.S. in Health Services and a M.S. in Health Services, with a concentration in community health. Arleen is incredibly passionate about promoting health and wellness and improving the health of our communities, particularly those that are diverse and underserved. During her participation in Leadership San Leandro, Arleen gained many new awesome friends from the 2015 class. She also gained confidence in her leadership abilities. She believes that this led to her recent promotion to Director of Health Education effective June 1, 2015, and her recent appointment to Human Services Commissioner for the City of San Leandro.

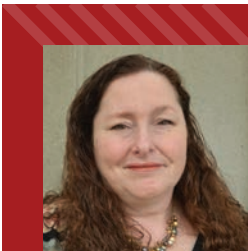


CANDACE CARPENTER

U.S. Government Accountability Office

Candace takes great joy in public service. She currently works for the U.S. Government Accountability Office where she prepares research reports to Congress on a variety of topics, including chemical and food safety, international HIV and malaria relief, and public participation in federal fisheries. Previously, she worked as a staff member for Senator Tom Torlakson and the Senate Local Government Committee. Candace has also served as an instructor in negotiation and conflict resolution at Harvard's Program on Negotiation, and as a policy coordinator for the California Foundation on the Environment and the Economy, which brings together elected and appointed officials, business, labor, and environmental leaders to collaborate on California policy issues. Candace holds a bachelor's degree in political economy from the University of California at Berkeley and a master's degree in public policy from Harvard University's Kennedy School of Government.

Candace loves living in San Leandro, and the Leadership program inspired her with the passion she encountered in leaders across her community. She was especially energized to learn about San Leandro educators' efforts to enrich students' lives through innovative programs such as the Season of Service, Period of Peace and the SLAM Academy at San Leandro High School. Candace is lucky to share her life with her supportive husband and her energetic four-year-old daughter (who loves San Leandro's downtown farmers market). Candace enjoys traveling, cooking, hiking, and teaching rowing to enthusiastic adults.



SUSAN HARLOW-SCHOTT

The Principled Academy, Marketing & PR

Susan Harlow-Schott is a trained singer, performer, business professional and life-long learner whose playful nature and smile have become her trademark.

Her business, Harlow Music & Entertainment, provides Karaoke, DJ, Live Band and Sound Reinforcement services for families and business. Since 2000, she's performed and written music with The Diehards who were featured on "The Beau Brummels: Continuum" album. Susan sang lead on four new songs, but this album's re-recording of "Just A Little" went to #11 on Billboard in December 2013.

Susan is a member of Northern California Songwriters Association; member, Director Consultant and Training Facilitator for Business Network International; San Leandro Chamber Ambassador and San Leandro Arts Commissioner. Susan believes, "Leadership San Leandro program gives great local experiences, information and education while providing quality speakers that have enriched me personally and professionally." In her free time, Susan loves volunteering with local charities such as Relay for Life, Four-Paws-Society and Stepping Stones. With her husband, Fred Schott, they love visiting their sons and grandchildren. She also likes to go to the ocean to meditate and enjoy the wind and sound of the water.

SUZANNA HSU

*Eden Medical Center, Outpatient Division,
Rehabilitation Manager*

Suzanna Hsu is the Rehabilitation Manager for Eden Medical Center's Outpatient division, located in San Leandro. Suzanna earned her BS degree in Integrative Biology from UC Berkeley in 1993, and two years after that, graduated from San Jose State University's Occupational Therapy program. She has been a registered Occupational Therapist in California for the past 19 years.



Through the Leadership San Leandro program, Suzanna has gained invaluable insight into the community for which she works and serves. The program has also helped her enhance her professional and interpersonal skills; all of which will help Suzanna lead her rehabilitation team more effectively.

One of Suzanna's fondest memories of Leadership San Leandro was attending the retreat in Sonoma at a rustic campground with no warm bed covers; and creating new and lasting friendships with participants of Leadership San Leandro.

Aside from focusing on her career, Suzanna is a devoted wife, and a loving and involved mother to her children, Olivia and Ian, ages 10 and 8. She is blessed to have a well balanced work and family life. Suzanna enjoys spending quality time with her family. She loves to travel, hike and run. This November, Suzanna will participate in her first half marathon race which is something that she can cross off of her "bucket list" of things to accomplish.

ELY HWANG

City of San Leandro Recreation Supervisor

Ely is the recreation supervisor assigned to customer service for The City of San Leandro's Recreation and Human Services Department with 15 years of experience. Ely is responsible for providing quality customer service to the community of San Leandro through programs, parks, events and facilities.

Enhancing the quality of life in San Leandro is their main goal. Ely handles the day-to-day registrations and reservations at the two community centers, oversees the production of the department's quarterly activities guide, and coordinates the city-wide volunteer program. Prior to San Leandro, Ely was recreation coordinator for the city of Albany and a member of the parent advisory commission for First Five Every Child Counts of Alameda County.



Ely earned her B.A. from the University of Asia and The Pacific (Manila, Philippines) in General Humanities where she graduated with honors; she continued her studies with the university in their Master's Program and was a featured playwright in their annual Shakespeare Festival.

Leadership San Leandro has given Ely and opportunity to enhance her skills professional and personally; the "gifts" provided by this program will be cherished for years to come.



PAUL JACKMAN

Fun Flicks Outdoor Movies, Owner

Paul Jackman is a community-aware entrepreneur and owner of FunFlicks Northern California and Southern Oregon. FunFlicks is the largest outdoor movie company in the nation offering outdoor movies on inflatable screens to communities, schools, and individuals.

With an BA in Recreation Management and more than ten years experience in Information Technology, Paul is uniquely positioned to provide an amazing outdoor movie experience. Highlighting his love for outdoor movies he writes a blog called Paul the Outdoor Movie Guy.

Paul grew his company from running one event in 2009 to more than 300 in 2014. He has presented at a number of national conferences for FunFlicks on employee training, implementation of an online event booking system, and event photography.

Paul's passion for photography and community is illustrated in his latest photo project, "This is San Leandro." The project highlights people and places in San Leandro.

Paul feels that Leadership San Leandro has opened a door to a group of like-minded individuals who want to make a difference in their community. He is proud to be a member of the "Best Class Ever!"



LISA BOYARS JACKSON

Eden Youth and Family Center, Community Engagement Specialist

Lisa's infectious enthusiasm ignites the possibility of engagement by connecting resources to opportunities, and that enhance the overall social impact of communities. Her passion for leveraging the playfield, of exposure to technology, education and career advancements to underrepresented youth and minorities, creates opportunities for change for the better.

Her experience in non-profits and educational settings has given her the drive to think out of the box to find funding, program build out and solutions to the issues at hand. Her conscious effort to think regeneratively on global issues encourages her think of everyone and everything to avoid the loophole of loss. Lisa has been an active citizen of San Leandro and continues to provide ongoing support at the local level of promoting, connecting and creating positive relationships for and with the city and its partners. Her personal background and story are what drives her to influence others in being the change they want to see. As a youth who struggled academically and socially do to lack of confidence, Lisa strives to empower young people and her community to want to work for positive impact for the future. San Leandro Leadership has definitely activated Lisa to move in full force, providing her tools and resources to get to the next level to leave a "big purposeful impact."

ALI KHAN

San Leandro Police, Police Sergeant

Ali is a 15-year veteran of the San Leandro Police Department. He began his career as a dispatcher, and then became a police officer. He held titles as trainer, crime scene technician, a hostage negotiator, critical stress incident management member, police cadet coordinator and special victims unit detective. In 2012, while holding a position as a detective, Ali was awarded "Police Officer of the Year." In 2014 Ali was promoted to the rank of sergeant and currently supervises patrol officers. Ali has enjoyed the bond and teamwork he has developed with Leadership San Leandro graduates. Ali said, "I'm grateful for the connections and networking I've made through Leadership San Leandro."



Lit San Leandro is a public-private partnership between the City of San Leandro and Dr. J. Patrick Kennedy offering the fastest internet speed available. The bandwidth capacity of fiber is almost limitless, currently offering upload and download speeds up to 10Gbits per second.

DERICK LEE

FLEETedu, Co-Founder

Derick Lee is a civic entrepreneur and technology evangelist specializing in education, community activation and strategic vision planning. Indigenous to San Leandro with a degree in Architecture from Cal Poly San Luis Obispo, Derick is a devout citizen committed to transforming San Leandro into a prototype city for innovation and technology. The biggest accomplishment he has made is transforming the lives of young San Leandroans to realize their own potentials and their pride in their city. Derick Lee has received the 2015 Makers and Innovators Award from the San Leandro Chamber of Commerce and Congresswoman Barbara Lee and the 2014 Mayor's Entrepreneur's Award. He is the co-founder of FLEETedu, founder of PilotCity and a founding partner of Bay Area Advanced Manufacturing (BAAM). He also works in education in China, alongside Dr. Elisabeth Montgomery, Senior Advisor for the Nanshan Education Bureau. He wrote a book titled *FM Venue: Businesses That Move*, a host in the City of San Leandro's New San Leandro video, and featured in Mozilla's *The Open Standard* news. Through Leadership San Leandro, he was pleased to meet citizens who are as excited about San Leandro's progress just as much as him. At this stage, Derick is crafting his life to be one of purpose, happiness, and impact.





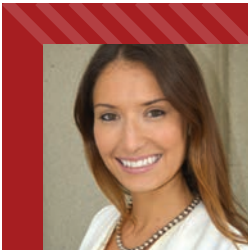
TRACEY LEVY

San Leandro Unified School District, English Teacher

Tracey has been instructing students in San Leandro for more than 15 years. She motivates, supports, and encourages students and parents towards greater accomplishments within their own lives. Ms. Levy has an uncanny ability to assist individuals as they unearth their true path and destiny. She has assisted thousands of individuals to follow their natural inclination and passion, and they subsequently reached a greater level of success as a result of her influence. Tracey is a compassionate, natural born leader who will accomplish amazing things in her own life and for the lives of individuals fortunate enough to cross her path.

For all Tracey's natural gifts, credentials and years of instructing, both youth and adults, Kahil Gibran captured the essence of her personality best when he stated: "Tenderness and kindness are not signs of weakness and despair, but manifestations of strength and resolutions."

Truer words could not be spoken of anyone. Whatever her journey leads, Tracey will do so with strength and resolve.



ESTHER MONTOYA-TAYLOR

Fund Development

Esther Montoya-Taylor is a proud San Leandro resident and native, and is looking to further her career in the community. She works in the fund development field and has started her career in the non-profit sector. Here she was responsible for planning and overseeing fundraising events, nurturing donor relations and campaigns, and managed social media and web presence.

Her degree is in Business Administration with a concentration in Marketing from Saint Mary's College of California. While in college, she spent two semesters studying abroad in Rome and one semester at sea, visiting a total of 18 countries.

Esther stated she thoroughly enjoyed Leadership San Leandro because "participation provided me a new insight into local businesses and industries, community leaders, and the innovative future of the city." She is thankful for the opportunity to participate in Leadership and has used the time to develop both professionally and personally.

She can be contacted by email at ecmt2@yahoo.com or view her LinkedIn page www.linkedin.com/in/esthermontoyataylor.

Ghirardelli chocolate squares and bars are only made in San Leandro on 139th Street. Ghirardelli Chocolate Company, incorporated in 1852, is the third oldest chocolate company in the U.S.



GUILLERMO MORALES

Thomas Jefferson Elementary School, Principal

Guillermo Morales has spent 21 years in education from classroom teacher to school principal. His passion has always been creating equitable opportunities for college and career readiness. After 20 years working in San Francisco and San Leandro high schools, this year is Guillermo's first year in elementary school at Thomas Jefferson Elementary School in San Leandro where he is building a college-going culture with elementary students. In the years to come, the Jefferson students will be problem-solving, critical- thinking, technology-driven, globally-connected students prepared for the challenges of college and careers. Guillermo has an amazing wife, Luz Elena Morales and three beautiful children: Diana (13), Xavier (11) and Julianna (6).



The best things about Leadership San Leandro were the connections made with cohort members and community leaders. These connections have helped Guillermo shape his thinking around his life's work as an educator, community member, father and husband.



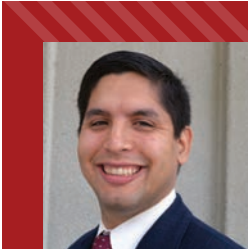
San Leandro is home to Zero Net Energy Center, an innovated training facility for electrical workers. It is the first retrofit of an existing commercial building that meets the U.S. Department of Energy zero net energy standards.

JUSTIN PROFFITT

City of San Leandro, Development Specialist

Justin is a city planner with over 15 years of experience in both the public and private sectors. He currently works for the City of San Leandro's Office of Business Development. He is interested in economic development and current planning. He is passionate about making cities thrive with public art, innovation and good planning. His biggest professional accomplishments so far are the establishment of the Culinary Arts District in Oakland Park, Florida and curating public art projects for the City of San Leandro. Justin is certified by the American Institute of Certified Planners (AICP) and a member of the American Planning Association. He earned a Master's Degree in Public Administration from Florida State University. His experience in Leadership San Leandro allowed him to realize his leadership qualities and use them both professionally and personally. He will remember all the great class members in the Leadership program. In his free time, Justin enjoys traveling home to South Florida to see friends and family and soak in the sun on the beautiful beaches.





PAUL SANFTNER

*Office of Alameda County Supervisor Nate Miley,
Constituent Liaison Assistant*

Paul Sanftner has the privilege of working for Supervisor Nate Miley as a Constituent Liaison out of his Castro Valley and Pleasanton offices. In 2011, Paul started out with Nate as a volunteer intern while he concurrently worked in the social service field helping adults with developmental disabilities in a San Leandro non-profit.

Paul is driven to provide the best quality service to the County's constituents because of the hard working example that is demonstrated by Miley on a daily basis. Also, Miley's staff have assisted Paul's development of understanding the complexities of government issues and personal growth. Paul is happily married to Serom Kim Sanftner (aka Ms. Universe). Paul and Serom met in San Leandro and went to the Davis Street Costco and the San Leandro Marina on their first date. Over the past eight months, Paul has grown more in knowledge, networking and development while being a part of Leadership San Leandro. Paul serves on the San Leandro Human Services Commission, Toastmasters, Nate Miley for Supervisor 2016 Committee, Alameda County Fire/Sheriff Chaplaincy and South San Leandro Neighborhood Association. Paul is a proud San Leandro resident.



JANE SONG

FH Dailey Chevrolet, Partner

Jane is a devoted wife and a full time mom of two, a partner and supporter of FH Dailey Chevrolet. Jane volunteers part time as an intake personnel at the Davis Street Family resource center. Recently she also took on a leadership role for New Creation United Methodist Church, her home church she has been attending for the past six years.

As a faithful Christian, Jane is passionate about serving people and the community. She is also interested in the field of psychology and dreams of using her skills and passion to better the lives of others one person at a time.

Being part of Leadership of San Leandro has allowed Jane to meet many new people in the community who share the same hopes and dreams for a brighter future. It has been a fun and memorable journey.



THANK YOU TO OUR SPEAKERS!

SPEAKERS

Robert Bernardo
*Communications Manager,
Port of Oakland*
Media Relations 101

Adele C. Berry
*Chief Strategist,
Brandora.com*
**Creating Your Personal
Brand**

Jock Breitwieser
*Director of Corporate
Communications, TriNet*
**Corporate
Communications
& Strategy**

Stephen Cassidy
Mayor, San Leandro
State of the City

Wilma Chan
*Alameda County
Supervisor*
**Leadership & Civic
Engagement**

Michael Colon
CEO, SEC Compliance
**Ignite your
Entrepreneurial Passion**

**Deborah Cox, Corina
Lopez, Jim Prola and
Lee Thomas**
San Leandro City Council
Q & A

Hale Foote
CEO, Scandic Spring
**Workforce Development
in Manufacturing**

John Gooding
CEO, The Quadric Group
**Behind the Scenes of
the Political Process**

Rose Johnson
*Executive Director, Davis
Resource Center*
**Embracing Risk &
Change**

Barbara Lee
*US Representative,
California's 13
Congressional District*
**Get to Know Your
Congresswoman**

Gasia Mikaelian
KTVU News Anchor
Creating a Career in TV

Ricardo Molano Nieto
*Professor, Stanford
University*
Identity Literacy

Sandra Spagnoli
*Chief, San Leandro Police
Department*
**SLPD's Role in the
Community**

Dawn Sprauge
*Vice President of Human
Resources, OS/soft*
Keys to Hiring Smart

Rod Wagner
Founder, Mind to Matter
**Turning Thoughts to
Things**

Mark Angel
*Professor, UC Berkeley
Extension*
**Project Management
in a Nut Shell**

PROFESSIONAL DEVELOPMENT TOPICS BY BREANNA HATCHER

- Building Your Conflict Management Skills
- Coaching & Mentoring Skills
- Create Your Personal Vision
- Develop Your Purpose
- Deliver Confident Presentations
- How to Get a Mentor
- The Secrets of Influencing
- The Top Six Networking Strategies
- Understanding Your Leadership Strengths

2014–15 Leadership Steering Committee

Kimberley Cunha *Kaiser Permanente*

Natasha Fernandez *Stepping Stones*

Emily Griego *San Leandro Chamber of Commerce*

Breanna Hatcher *Sky Coaching Inc.*

Jeff Kay *City of San Leandro*

Arleen Lum *AT&T*

Marguerite Mazzitti *March of Dimes*

Patricia Minnis *SLED*

Derrick Oldridge *Divine Home Care*

Rachelle Parham *San Leandro Adult School*

Steve Song *F.H. Dailey*

YOU ALL MAKE IT ALL POSSIBLE!

LEADERSHIP SAN LEANDRO ALUMNI

CLASS OF 1995–96

Val M. Amtzen
Dennis Berger
Robert F. Biasotti
Paul J. Cayere
Lisa Centoni
Thomas W. Edwards
Nancy Fong
Robert W. Hallett
Deidre Heitman
Jan Juls
Denise M. Iavarone
Debra Jeffrey
Timothy D. Kelly
Kati Knox
Jack Papazian
Dolores Reveles

CLASS OF 1996–97

Virginia Beopple
Terri Chalmers
Laurie Chavoen
Christine A. Coverdale
Michael A. Crosetti
Sue Darden
Chris Ehrenberg
Jack Isola
Kevin Jenkins
Robert S. Jones
Dan S. Lumford
Melody Marr
Janet A. McCarthy
Cheryl Nickerson
David Sams
Darryl J. Shields
Nathan Walden
Odeter Waters

CLASS OF 1997–98

Steve Brown
Maryilyn Fels
Eric Fong
Linda Granger
Louis Heystek
Hancy Hillis
Carol Librecht
Joanne Lothrop
Jodi Lytel
Gayle Peterson
Suzanne Rudisill
Donna Russell Snyder
Dick Sewell
Ron Shaw
David Sloan
Sig Ulland
Karen Von Glahn
Aleta Walker

CLASS OF 1998-99

Bill Cahoon
Norma Cole
Janice Marie
Ferguson
Melinda Guarino
Sherry Hitchcock
Vince Matthews
Julie Newman
Leslie Penner
Steve Pomeroy
James J. Purchio
Carole Rinaldi
Don Strongman
Bobbie Taylor-Scalise
LeAnn Walker
Rick Williams
Debbie Wong

CLASS OF 1999–2000

Tom Barger
Jim Bolar
Rosaline Brown
Diane Cariss
Wendy Dolan
Sheldon Gilbert
Tracy Gleason
Bob Glotch
Terry Guillory
Chrysan Lindstrom
Lorranine Lins
Terry McCall
Sandy Mitchell Jr.
John Morton
Gregory Park
Derek Rinetti
Shawn Wilson

CLASS OF 2000–01

Oliver Becker
Cyril Bonanno
Raymond Davis
Gail Drake
Heidi B. Finberg
Sue Hart
Luster Lee Knight
Carolyn Knudsten
Jennifer Kreibl
Patricia Millar
Brian Sandine
Diana Souza
Jae Way
Bob Williams

CLASS OF 2001–02

Bonnie Black
Suyan Campa
Jeanine Edmond
Seth Hudson
Jeff R. Carson
Roxane Jablonski
Theresa M. John
David A. Krueger
Arlene Lum
Micheal Murphy
William O'Mahoney
Sandra Ann Akaug
Bill Stephens
Uchenna O.
Udemezue
Richard Wahl
Victoria Walker
Lily Wang
Donald R. Zauner, Jr.

CLASS OF 2002–03

Wafaa Aborashed
Barbara Cayere
Christina Charlton
Eric Figueroa
Mary Grodin
Leah S. Hall
Christine J. Landreth
Jason F. Laude
Enrido Lio
Jan Marie McGee
Angela Morgan
Charles J. Prosper
Henry I. Roberts
Efren T. Romero
Cynthia V. Simmons
Robert A. Snodgrass

CLASS OF 2003–04

Sabrina Almazan
Catherine Brewer
Stephen Cassidy
Dr. Mike Chang
Regina Diego
David Erwin
Eowyn Gorman
Marina Handa
Tim Holmes
Ana-Marie Jones
Matthew Ketchem
Mary McCarthy
Teresa McGill
Debra Vandiver
Thomas Wagner

CLASS OF 2004–05

Robert F. Caughell
Perry Chicaine
Deborah Cox
Sylvia Deaton
Irene Fujii
Michael Gregory
Jerry Hamilton
Joanne Hansen
Matthew Hill
Robert C. Johnson
Denise Bownds
Kaplan
Alisha L. McCutcheon
Carole McKindley-
Alvarez
Antoinette Mobley
Kathleen Ott
Debbie Pollart
Henrietta Sakamake





Norwood Square, Jr.
Jens Welden

CLASS OF 2005–06

Jane Abelee
Eileen Borton
Peggy Hynd Combs
Jerry M. Garcia
Mary L. Garcia
Gina Hunt
Phil King
Tom Liao
Mike Ryan
Desi Speh
Christine Wise

CLASS OF 2006–07

Reh-Lin Chen
Diana Cohn
Carrie Dohert
Vic Entrikin
Rebecca Jewel
John Kaplan
Robin Michel
Austine Osakwe
Robert Patrick
Elaine Rogers
Debbie Scanlon
Rob Schnepf
Dawn Valadez
Rob Wallinger

CLASS OF 2007–08

Denise Abero
Rudy Abney
James Cobb
Rosemary Delia
Kidada Dobbins
Greg Dyer
Ron Figuera

Michael Fitzgerald
Daniel Johnson
Tim Orr
Bill Sherwood
John Taylor
Hilary Van Austen
Liz Varela

CLASS OF 2008–09

Sally Barros
Neena Bath
Estelle Clemons
Brandi Collins
Jon Ferguson
Carmen Fewless
Home
Gene Judson
Steve Lombardi
Corina Lopez
Sarmad Naqvi
Mary Styner
Anna S. Wong

CLASS OF 2009–10

Missy Brooks
Gene Calderon
Kimberley Cunha
Emily Griego
Toni Guy
Breanna Hatcher
Ten Henderson
Gayle Hudson
Laython Landis
Tracey Lenz
Adrian Martinez
Rochelle Maselli
Tim Ricard
Sally Scrutchin
Kristina Seher

John Torres
Jeff Tudor
Keith Weiner

CLASS OF 2010–11

Jorge Atristain
Marla Blagg
Chris Crow
Evelyn Gonzalez
Wayne Gregori
Matthew Jones
Jeff Kay
Kerri Kovach
Marguerite Mazzitti
Gwendolyn McClain
Peggy McCormick
Rene Mendieta
Eric Moore
Cheryl Mott
Sabrina Thomas

CLASS OF 2011–12

Vonnah Bagner
Thomas Bermudez
Doug Calcagno
Renee Fazeli
Natasha Fernandez
Brian Hill
Kenneth Kinck
Peter Holtzclaw
Jean Hom
Sara Mestas
Patricia Minnis
Michelle Musgrove
Andrew Soliz
Grace Tesorero

CLASS OF 2012–13

Cece Adams
Patricia Bidar
Dawn Fehr
Robert Hopken
Mercy Jesswani
Liz Jimenez
Whitlow Magor
Stephanie Radecke
Mike Sobek
Steve Song
Farley Walker
Davon Ward
Tarya White

CLASS OF 2013–14

Breyana Riggsbee
Jeremy Ghassemi
Jill Gregori
Hayde Mazariego
Michele Minsuk
Sarah Nash
Derrick Oldridge
Mia Ousley
Susan Miranda
Rachelle Parham
Michelle Ratto-
Branchaud
Richard Slade
Kevin Sledge
Gloria Smith
Rich Spediacci
Kim Stange-Herlihy
Makiko Watanabe
Nick Zubel

